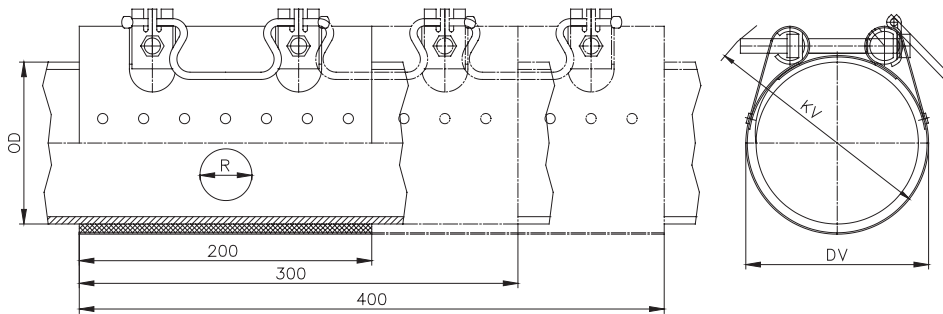


STRAUB-CLAMP SCE Ø 44.0 - 330.0 mm

Components	Materials
Casing	AISI 304
Bolts	A2 - 70
Bars	AISI 304
Sealing sleeve EPDM	Temp.: -5°C up to +40°C Medium: all qualities of water, waste water, air, solids and chemical products
Sealing sleeve NBR	Temp.: -5°C up to +40°C Medium: water, gas, oil, fuel and other hydrocarbons



Clamp length	R _{max}
200 mm	50 mm
300 mm	150 mm
400 mm	250 mm

OD [mm]	Clamping range [mm]	PN ⁷ [bar]	2 locking bolts [mm]	3 locking bolts [mm]	4 locking bolts [mm]	DV [mm]	KV [mm]	Torque rate [Nm]	Allen head [mm]	Thread M...
44.0	44 - 48	16.0	200	300		60	117	20	17	10
48.0	48 - 52	16.0	200	300		64	120	20	17	10
54.0	54 - 58	16.0	200	300		70	125	20	17	10
60.0	60 - 67	16.0	200	300		79	127	20	17	10
67.0	67 - 74	16.0	200	300		86	130	20	17	10
70.0	70 - 77	16.0	200	300		89	135	20	17	10
75.0	75 - 83	16.0	200	300		65	138	20	17	10
82.0	82 - 89	16.0	200	300	400	101	145	20	17	10
87.0	87 - 95	16.0	200	300	400	107	149	20	17	10
88.0	88 - 98	16.0	200	300	400	110	149	20	17	10
95.0	95 - 104	16.0	200	300	400	116	155	20	17	10
108.0	108 - 118	16.0	200	300	400	120	166	20	17	10
113.0	113 - 123	16.0	200	300	400	135	171	20	17	10
118.0	118 - 128	16.0	200	300	400	140	175	20	17	10
120.0	120 - 131	16.0	200	300	400	143	176	20	17	10
132.0	132 - 142	16.0	200	300	400	154	188	35	19	12
135.0	135 - 145	16.0	200	300	400	157	191	35	19	12
139.0	139 - 149	16.0	200	300	400	161	195	35	19	12
145.0	145 - 155	16.0	200	300	400	167	201	35	19	12
159.0	159 - 170	16.0	200	300	400	182	214	35	19	12
167.0	167 - 178	16.0	200	300	400	190	221	35	19	12
176.0	176 - 187	16.0	200	300	400	199	230	35	19	12
193.0	193 - 203	10.0	200	300	400	215	247	35	19	12
215.0	215 - 225	10.0	200	300	400	237	268	35	19	12
228.0	228 - 239	10.0	200	300		251	281	35	19	12
240.0	240 - 250	10.0	200	300		262	292	35	19	12
261.0	261 - 271	10.0	200	300		283	313	35	19	12
269.0	269 - 280	10.0	200	300		292	321	35	19	12
280.0	280 - 291	10.0		300		303	332	35	19	12
315.0	315 - 325	10.0		300		337	366	40	19	12
320.0	320 - 330	10.0		300		342	371	40	19	12

Remarks:

- Follow fitting instructions
- Different pipe diameters (transition) are not possible
- Test pressure = PN x 1.5
- Radial length of damaged area max. 20% of pipe outside diameters
- The repair clamp must be centred over the damaged area

⁷ Working pressure for gas: max. 5 bar