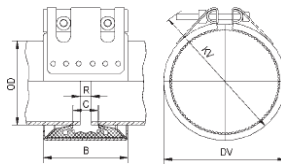
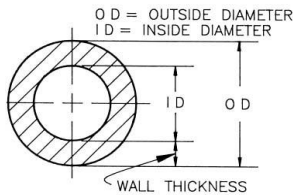


**Pipe Coupling model: PLAST COUPLING**

1. Available in S the short version only
2. Axially restrained pipe coupling for connecting PE or other plastic pipe with copper rings
3. Prevents pipe connections from being pushed or pulled with grip rings and teeth locking the pipes in place together with the tightening of the bolt mechanism and solid bars.
4. Good for connecting PE or other plastic pipe securely with zero leakage
5. 316 Stainless Steel Coupling with EPDM, NBR, VITON or GORE-TEX seal



Coupling Size	PE Pipe OD	Pipe OD range	Short length	Long Length	Pipe Gap (R) Short	Pipe Gap (R) Long	Maximum Bolt Tightness	Pressure	Estimated weight
(mm)	(mm)	(mm)	(mm)	(mm)	(mm)	(mm)	(Nm)	Bar	(Kg)
110	110	108-112	120		5		40	20	0.55
125	125	123-127	120		5		50	20	1.2
140	140	138-142	120		5		50	20	1.3
160	160	158-162	120		5		60	20	2.7
180	180	178-182	152		5		60	16	3.4
200	200	198-202	152		5		60	16	4.8
225	225	223-227	152		5		60	16	5.8
250	250	248-252	152		5		60	16	6
280	280	278-282	152		5		60	16	6.5
315	315	313-317	152		5		60	16	7

