



Data Sheet: FLANGE ADAPTOR

1. Manufactured from 316 Stainless Steel Flange and Pipe. Other material options available.
2. Good for connecting most pipe materials when a flange end connection is required
3. 316 Stainless Steel ORBIT COUPLINGS with EPDM, NBR seal
4. Flange Adaptors are designed to suit the outside diameter of the joining plain ended pipe.

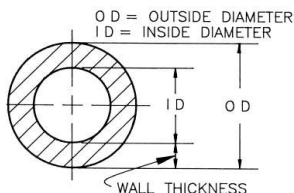
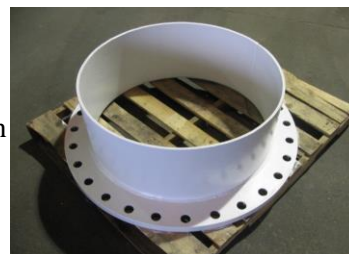
Flange adaptors enable the connection of a plain ended pipe to a flange ended pipe without the requirement for welding on site.



Installation of the Adaptor

Flange Adaptor pipe spool connects to the other pipe with the same outside diameter.

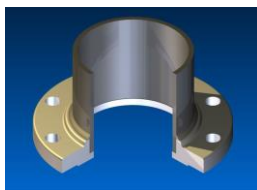
Flex Grip S Coupling used to tighten and seal the join of the mating surfaces.



Choosing the correct Flange Adaptor

Flange adaptors are available in a wide variety of sizes to suit.

1. Determine which type of flange you need the adaptor to bolt to.
2. Measure the outside diameter of the plain ended pipe



We manufacture flange adaptors for the following flange types:

American: ANSI/ASME

British: BS4504

Australian: AS4087 & AS2129

Japanese: JIS B2220

Available in sizes up to 5000mm

