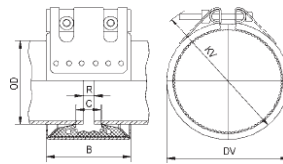
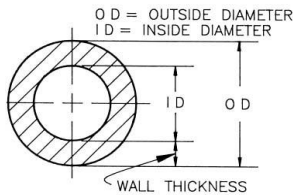


Pipe Coupling model: FLEX GRIP STEPPED

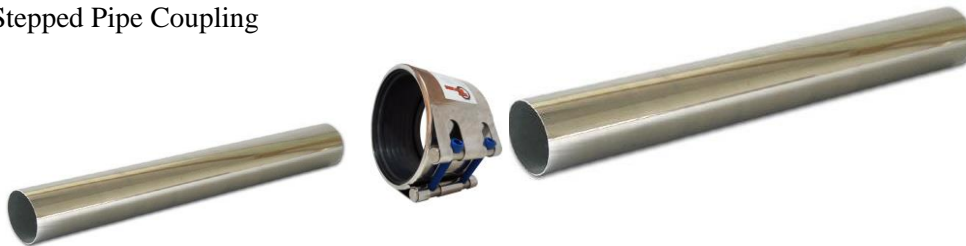
1. Available in S, short versions
2. Non-axially restrained pipe coupling for pipes with different outside diameters
3. Allows slight misaligned pipe connection for pipes with different outside diameters
4. Allows vibration in the pipeline and slight movement
5. Good for connecting Metal, PE, FRP, GRP, PVC pipe
6. 316 Stainless Steel Coupling with EPDM, NBR, VITON or GORE-TEX seal



Higher Bar pressures available

Coupling Size	PE Pipe OD	Metal Pipe OD	Short length	Long Length	Pipe Gap (R) Short	Pipe Gap (R) Long	Maximum Bolt Tightness	Pressure	Estimated weight
(mm)	(mm)	(mm)	(mm)	(mm)	(mm)	(mm)	(Nm)	Bar	(Kg)
40	40	42.4	57		5	n/a	15	32	0.55
50	50	48.3	80		5	n/a	15	32	0.8
63	63	60.3	80		5	n/a	30	32	1
75	75	76.1	107		5	n/a	30	28	1
90	90	88.9	107		5	n/a	30	28	1.5
110	110	108	116		5	n/a	50	28	2
110	110	114.3	116		5	n/a	50	28	2
140	140	139.7	155		5	n/a	50	28	2.5
160	160	168.3	155		5	n/a	80	28	3

Stepped Pipe Coupling



Double Lock Clamp in sizes up to 5000mm

