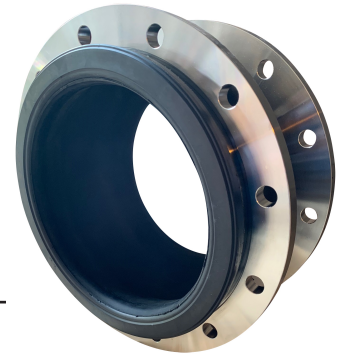




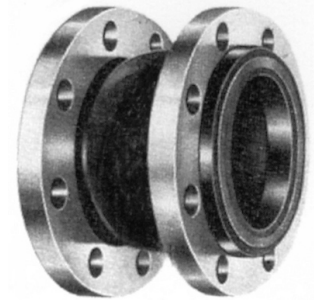
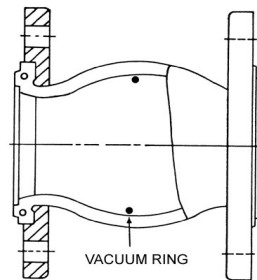
style fsf single sphere rubber expansion joints



Discharge and vacuum applications

The vacuum ratings in the data sheets are based on neutral (free) installed length without external load. Joints should not be installed 'extended' on vacuum applications.

The standard joints have a rating of 660mm H.g. This rating can be increased to 760mm H.g. by inserting a reinforcing ring into the crown of the arch.



style FSF with 316 stainless steel flanges

	nominal bore	length installed mm			allowable movements from free length				pressure @ 80°C	
	inside inches	free	min	max	axial mm comp	lateral mm elong	angular deg	positive kPa	vacuum mm H.g.	
DN32	1 1/4	95	89	97	8	4	8	15	1600	660
DN40	1 1/2	95	89	97	8	4	8	15	1600	660
DN50	2	105	99	107	8	5	8	15	1600	660
DN65	2 1/2	115	107	118	12	6	10	15	1600	660
DN80	3	130	122	133	12	6	10	15	1600	660
DN100	4	135	122	140	18	10	12	15	1600	660
DN125	5	170	156	175	18	10	12	15	1600	660
DN150	6	180	167	185	18	10	12	15	1600	660
DN200	8	205	186	212	25	14	22	15	1600	660
DN250	10	240	221	247	25	14	22	15	1600	660
DN300	12	260	241	267	25	14	22	15	1600	660
DN350	14	265	246	273	25	14	22	15	1034	660
DN400	16	265	246	273	25	14	22	15	860	660
DN450	18	265	246	273	25	14	22	15	860	660
DN500	20	265	246	273	25	14	22	15	860	660
DN600	24	265	246	273	25	14	22	15	860	660

Test pressure is 4 times the pressure rating
 PN16 rated up to size DN300, PN10 Pressure DN350 - DN600.

High pressure models available with a working pressure of PN20 and PN25. Contact us for more information on high pressure models.

