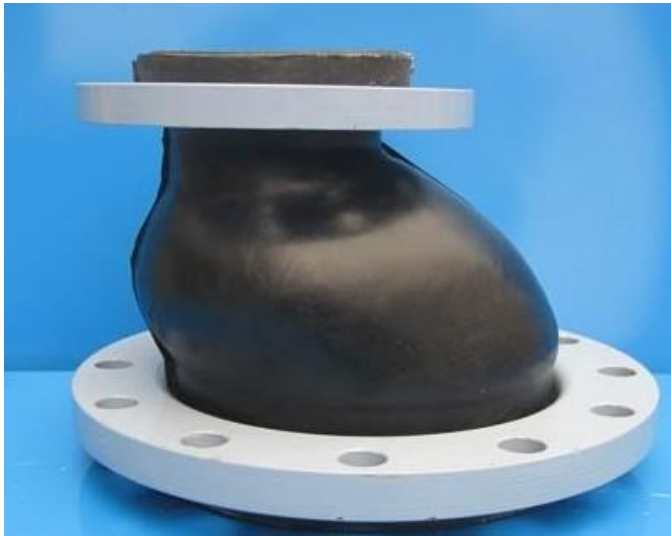




# Eccentric Reducing Rubber Expansion Joint – Sphere type



Available with different flanges on request.



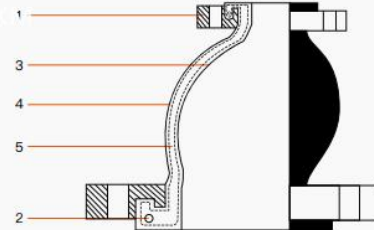
Available in a range of sizes on request.

# Datasheet

## Eccentric Reducer Rubber Expansion Joint



NO.	Components	Materials
1	Flange	Q235 , SS304, 316
2	Pressurized Ring	Steel Wire
3	Inner Rubber Layer	EPDM, NR, NBR, CR, FKM
4	Outer Rubber Layer	EPDM, NR, NBR, FKM, CR
5	Skeleton Layer	Nylon Cords, Polyester Cords



### Introduction

Eccentric reducer rubber expansion joint is similar to concentric reducer rubber joint, often used to connect the different sized pipes, in order to facilitate the connecting of pipes.

Eccentric reducer rubber joint is often installed on the pipe joints in different axis, of which the bottom of pipe both ends are in the same plane, but the center is not on the same line.

It is mainly used to in piping and/or operating equipment applications such as: Pumps, Chillers, Cooling Towers, Compressors, Blowers, Fans, etc.

- Connect different sized pipes, easy to install
- Unique structure, save installation space, save costs
- Reduce piping stress, noise and vibration
- Compensate the misalignment
- Integrally flange design, no gaskets required.

### Parameters

Size	DN32mm-DN400mm
Pressure	0.6~2.5Mpa PN6~PN25
Temperature	-40~ 80°C (Customer's Need)
Protection Class	Class A
Color	Customer's Need
Medium	Water, Oil, Gas, Acid, Alkali, etc
Certificate	ISO 9001~2008

### Specification

Nominal Diameter (DN)	Length (mm)	Axial Displacement		Lateral Displacement (mm)	Deflection Angle (a1+a2)°
		Expansion (mm)	Compression (mm)		
50*40	180	30	20	45	35°
65*40	180	30	20	45	35°
65*50	180	30	20	45	35°
80*50	180	30	20	45	35°
80*65	180	30	20	45	35°
100*50	180	30	20	45	35°
100*65	180	30	20	45	35°
100*80	180	30	20	45	35°
125*65	180	30	20	45	35°
125*80	180	30	20	45	35°
125*100	200	30	22	40	35°
150*65	200	30	22	40	35°
150*80	200	30	20	45	35°
150*100	200	30	22	40	35°
150*125	200	30	22	40	35°
200*100	220	30	22	40	35°
200*125	220	35	25	40	30°
200*150	220	35	22	40	35°
250*125	220	35	25	40	30°
250*150	220	35	25	40	30°
250*200	220	35	25	40	30°
300*150	220	35	25	40	30°
300*200	220	35	25	40	30°
300*250	220	35	25	40	30°

1.For more size and parameters, please contact us.

2.If OEM orders with drawings or samples, please contact us

