

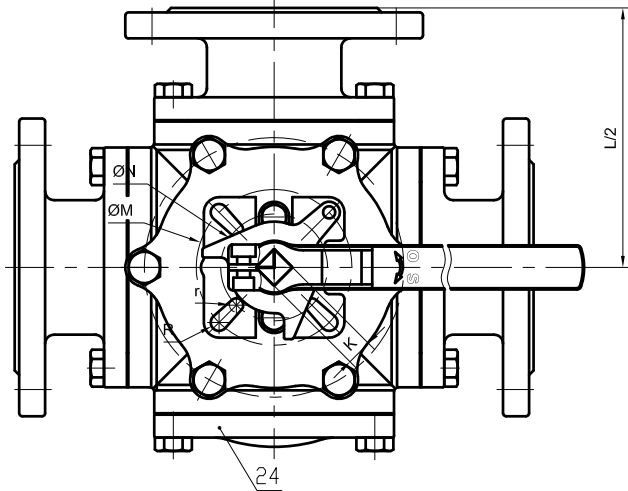
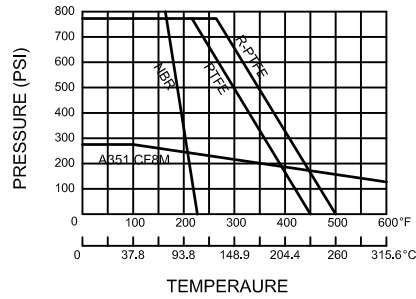
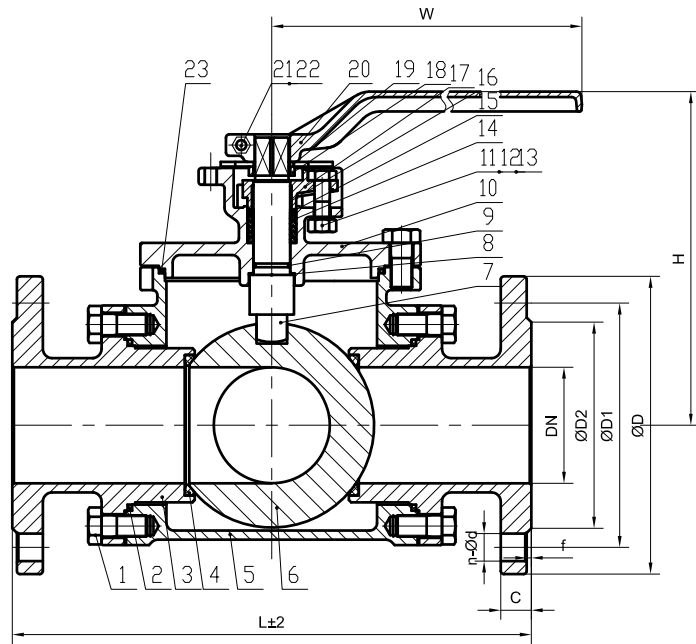
Dimensions (mm)

NPS	L	D	D1	D2	C	f	n-Ød	H	W	K	M	N	R	r
1"	215	110	79.4	50.8	12	2	4-Ø16	104	150	11	50	42	3.5	3
1 1/2"	255	125	98.4	73	15	2	4-Ø16	125	200	14	70	50	4.5	3.5
2"	280	150	120.7	92.1	16	2	4-Ø19	154	270	17	70	-	4.5	-
2 1/2"	310	180	139.7	104.8	18	2	4-Ø19	162	270	17	70	-	4.5	-

No.	PART	QTY.	MATERIAL
1	Bolt	-	ASTM A193 B8
2	Gasket	3	RPTFE
3	Bonnet	3	ASTM A351 CF8M
4	Seat	4	RPTFE
5	Body	1	ASTM A351 CF8M
6	Ball	1	SS316
7	Stem	1	ASTM A276 316
8	Stem Washer	1	RPTFE
9	O-Ring	1	VITON
10	Bolt	2	ASTM A193 B8
11	Spring Washer	2	SS304
12	Nut	2	ASTM A194 8
13	Packing	-	RPTFE
14	Gasket	1	RPTFE
15	Bushing	1	PTFE
16	Gland	1	ASTM A351 CF8
17	Washer	1	PVC
18	Handle	1	Stainless Steel
19	Stopper	1	SS304
20	Hex Socket Bolt	1	ASTM A193 B8
21	Nut	1	ASTM A194 8
22			
23			
24			
25			
26			
27			
28			
29			
30			

Test Pressure	Shell Test	3.0 MPa
	Seal Test	2.2 MPa
	Air Test	0.6 MPa
	Suitable Temp.	-25 ~ 180 °C
Standard	Face to Face	Manufacturer's Standards
	End Connection	ASME B16.5
	Valve Design	ASME B16.34
	Valve Test	API 598

Drawing No.	Date	Figure No.	Rev No.
AN	May 23, 2017	ARB36FEL	001
Ball Valve , Class 150 , L-Port			



No.	PART	QTY.	MATERIAL
1	Bolt	-	ASTM A193 B8
2	Gasket	4	RPTFE
3	Bonnet	3	ASTM A351 CF8M
4	Seat	4	RPTFE
5	Body	1	ASTM A351 CF8M
6	Ball	1	SS316
7	Stem	1	ASTM A276 316
8	Stem Washer	1	RPTFE
9	O-Ring	1	VITON
10	Upper Bonnet	1	ASTM A351 CF8M
11	Bolt	2	ASTM A193 B8
12	Spring Washer	2	SS304
13	Nut	2	ASTM A194 8
14	Packing	-	RPTFE
15	Gasket	1	RPTFE
16	Bushing	1	PTFE
17	Gland	1	ASTM A351 CF8
18	Washer	1	PVC
19	Handle	1	Stainless Steel
20	Stopper	1	SS304
21	Hex Socket Bolt	1	ASTM A193 B8
22	Nut	1	ASTM A194 8
23	Gasket	1	RPTFE
24	Back Bonnet	1	ASTM A351 CF8M
25			
26			
27			
28			
29			
30			

Test Pressure	Shell Test	3.0 MPa
	Seal Test	2.2 MPa
	Air Test	0.6 MPa
	Suitable Temp.	-25 ~ 180 °C
Standard	Face to Face	Manufacturer's Standards
	End Connection	ASME B16.5
	Valve Design	ASME B16.34
	Valve Test	API 598

Dimensions (mm)

NPS	L	D	D1	D2	C	f	n-Ød	H	W	K	M	N	R	r
3"	340	190	152.4	127	19	2	4-Ø19	218	320	17	102	70	5.5	4.5
4"	390	230	190.5	157.2	24	2	8-Ø19	247	500	22	102	70	5.5	4.5

Drawing No.	Date	Figure No.	Rev No.
AN	May 23, 2017	ARB36FEL	001
Ball Valve , Class 150 , L-Port			